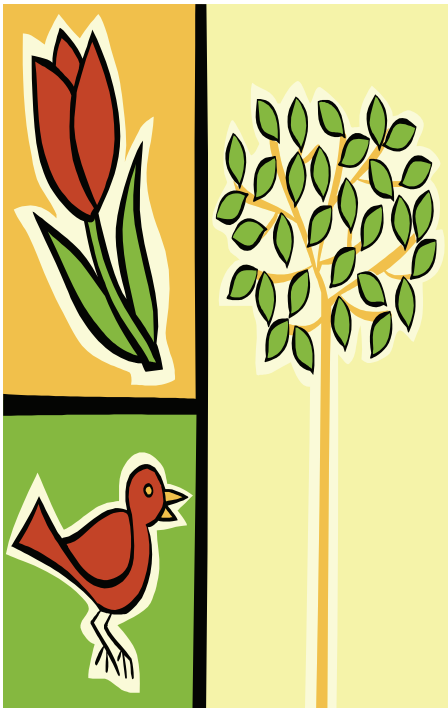




NEWsworthy

A newsletter for the members of Minnesota NEW – National Eligibility Workers Association

“SPRING” INTO N.E.W.!!!



It's that time again....Time for the annual one-day training seminar offered by the Minnesota Chapter of N.E.W.

This year's conference is scheduled for Tuesday, April 22, 2008. The seminar will be held at the Holiday Inn in St. Cloud. See the enclosed seminar agenda and registration information.

This year's seminar theme is "N.E.W. – What's In It For You?" After the long, cold months of winter, this one day seminar promises to help you "thaw out" and "warm up." The workshops offered will help to "hatch" new ideas and "shower" your mind and body with much needed knowledge, encouragement and relaxation. New friendships are bound to "blossom" as you network with other Minnesota eligibility professionals and share ideas and information about the important work you do every day.

"Spring ahead" in your professional and personal life...Register for the seminar TODAY!

Minnesota N.E.W. Address:

Minnesota N.E.W.
PO Box 79
Zimmerman, MN 55398

Quotes to Ponder....

*"Watch your thoughts,
Your thoughts become your words,
Watch your words,
Your words become your actions,
Watch your actions,
Your actions become your character,
Watch your character,
Your character becomes your destiny."
-author unknown-*

*"Every job is a self-portrait of the person
who did it.*

Autograph your work with excellence."

-author unknown-



Meet Your Board

It's time to meet board member Karen O'Keefe!

Karen supervises one of three financial units in Stearns County, where she has been employed since 1983. She laughs as she fondly recalls accepting a financial worker position with the county's Energy Assistance Program, expecting that summers would be free. Well, the following year she became a Child Support Officer, which meant no more seasonal work! She spent nearly eight years as a CSO followed by five as Stearns County's first Fraud Prevention Specialist. Since 1997 she's been supervising various income maintenance programs including health care, food support, and emergency programs.

Karen's interest in N.E.W. began upon attending the 2005 Summer Seminar. Karen always thought Minnesota eligibility workers would benefit from a professional organization that not only addressed program policies and procedures, but focused on the development of "soft skills." NEW fulfilled that gap, and she knew her employment history and

experience would enable her to act as an effective board member.

Planning the annual seminar and contributing articles to NEWSworthy are Karen's main responsibilities as a board member. "It's so exciting knowing we have done our best to provide a time-worthy seminar," she says. "Anything that takes our attendees away from their desks for a day must be relevant, interesting, and engaging." Keeping a pulse on dynamic and important workplace issues is a year-round activity that makes seminar planning a bit easier in the long run.

Recruiting professionals to increase board membership is a top priority for Karen and her colleagues. "We only meet once a month, so it isn't a huge time commitment that people naturally fear. It's a creative outlet for those interested in developing their communication skills. Everyone brings something to the table, and all types and levels of talents are welcome. And last of all, and no less important, it's a fun group!"

Mark Your Calendars!

Minnesota N.E.W. Seminar
Tuesday, April 22, 2008
(see enclosed registration form)

33rd Annual National N.E.W. Conference
August 17-20, 2008
Anaheim, CA
(more information at
www.nationalnew.org)



Notes from the President

By Dale Carlson, Dakota County

Another year has quickly gone by and the Minnesota-N.E.W. Board is busy with the final planning of the spring NEW training seminar. This year, Minnesota-N.E.W. will hold its training seminar on April 22nd at the Holiday Inn in St. Cloud. (See registration materials inside for more details.)

This spring in St. Cloud, we'll be

- ❖ sproutin' up a N.E.W. year
- ❖ sproutin' up some N.E.W. ideas
- ❖ sproutin' up some N.E.W. friends
- ❖ sproutin' up N.E.W. commitments
- ❖ sproutin' up some N.E.W. tools, and
- ❖ sproutin' up some N.E.W. answers!

At our business meeting in the

morning, we will be reviewing and approving some minor changes to our by-laws. We will also present the winner of the N.E.W. HORIZONS Award for 2008. Be sure to see details inside as to how to nominate someone.

Everyone continues to be challenged with the complexity of our jobs and the depth of need within our communities. This is a chance to get away from the office for just a day to refresh and re-group. Be sure to sign up and also, for first time members or referrals, we will be contributing a portion of the membership to fee anyone signing up for membership on the day of seminar. We have a great program planned for this year and we hope to see you in April!

Dale Carlson
President, Minnesota -N.E.W.

Check These Web Sites!

www.nationalnew.org
National N.E.W. web site

www.mn-new.org
Minnesota Chapter of
N.E.W. web site

Recycle--Recycle- Recycle!

Pass this newsletter on to a
co-worker!

We Have A Winner!

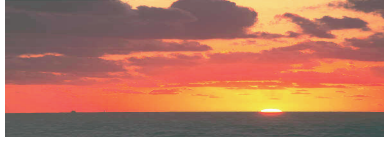
Barb Mathison from Mille Lacs County is the winner of the "Rename the Summer Seminar Contest." Barb's "spring" inspired words are being used throughout this newsletter and to promote this year's April seminar. Barb wins a 1-year membership to N.E.W. (\$35 value). Let's see how many more "new" ideas will "sprout up" at this year's seminar!!!!

Join N.E.W. at the annual seminar on April 22, 2008 and SAVE \$15!!!!

If you enroll as a 1st time member at the annual Minnesota-N.E.W. seminar on April 22, 2008, MN-N.E.W. will pay \$15 of the \$35 annual membership fee – **YOU** only pay \$20!!!

Already a N.E.W. Member?

If you refer a co-worker to N.E.W. and he/she joins N.E.W. at the April 22, 2008 seminar, Minnesota-N.E.W. will pay \$15 of your \$35 annual renewal fee – **YOU** only pay \$20!!!



2008 N.E.W. HORIZON NOMINATION FORM

IT'S THAT TIME OF YEAR TO NOMINATE YOUR FELLOW CO-WORKER FOR THE 2008 N.E.W. HORIZON AWARD. THIS YEAR'S NOMINATION WILL BE BASED ON THE MN-N.E.W. CODE OF ETHICS. (Members of the Board are exempt from nomination)

LISTED BELOW ARE THE NOMINATION CRITERIA:

***SERVES THE PUBLIC INTEREST: TREATS ALL COLLEAGUES, CLIENTS AND OTHER MEMBERS OF THE PUBLIC WITH RESPECT, DIGNITY, AND COURTESY.**

***RESPECTS THE LAW: ADHERES TO ALL DATA PRIVACY AND CONFIDENTIALITY LAWS AND POLICIES.**

***DEMONSTRATES PERSONAL INTEGRITY: CARRIES OUT PERSONAL AND PROFESSIONAL ACTIVITIES IN A WAY THAT INSPIRES PUBLIC CONFIDENCE, TRUST, AND RESPECT.**

***PROMOTES AND SUPPORTS ETHICAL ORGANIZATIONS: DEMONSTRATES SUPPORT FOR THE MISSION, GOALS, AND POLICIES OF N.E.W.**

***STRIVES FOR PROFESSIONAL EXCELLENCE: BY ACKNOWLEDGING AND TAKING RESPONSIBILITY FOR ERRORS.**

TO NOMINATE AN INDIVIDUAL SIMPLY WRITE A FEW SHORT SENTENCES AND EMAIL IT TO Donna.Biederman@state.mn.us OR Dale.Carlson@CO.DAKOTA.MN.US

THE DEADLINE FOR NOMINATIONS IS APRIL 4, 2008

DON'T DELAY----DO IT TODAY

The Minnesota N.E.W. Board Needs You!

We currently have several openings on our board and invite you to consider joining us. As a board member of the Minnesota Chapter of N.E.W., you will have opportunities such as:

- Developing articles for our semi-annual newsletter;
 - Providing ideas for legislative input;
 - Networking with other professionals;
 - Planning the annual Summer Seminar; and
- Enhancing your professional skills and career opportunities.

Please feel free to call one of the board members if you want more information.

Take the challenge and become active in **N.E.W.!**

MN N.E.W.

Board Members

Dale Carlson, President Dakota County	651-554-5671
Karen O'Keefe, Vice-President Sterns County	320-656-6119
Erica Buelow, Treasurer Anoka County	763-323-6031
Donna Biederman, Secretary DHS	651-431-4097